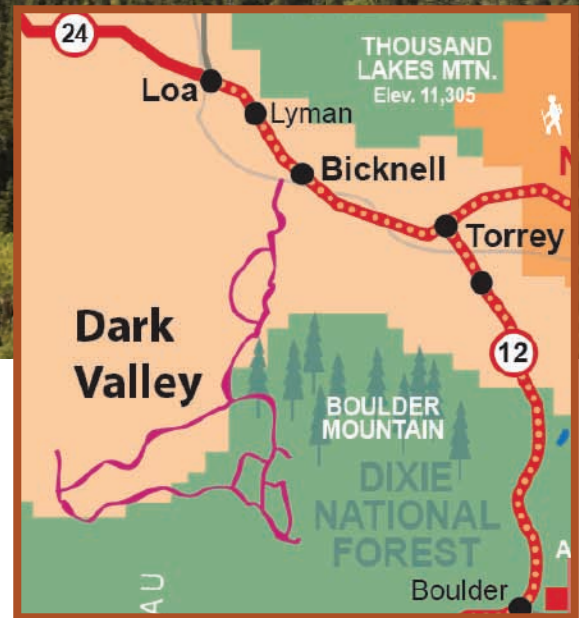


DARK VALLEY

Explore the Lush Green Forest of Boulder Mountain.



LOCATION

The staging area for this trail is at the Ranger station between Bicknell and Loa, or you can stage at the Great Western Trail.

TRAIL TYPE

ATV/Jeep/4WD and pick up. Be aware that there are different types of vehicles that do this trail often.

DISTANCE

This trail length can vary depending of what you decide to do. Recommended loop is 20 miles long.

DIFFICULTY

Moderate. The Dark Valley Shelf trail are difficult and ATV/OHV ONLY! There are no width restrictions anywhere on the trail.

TRAIL DESCRIPTION

This trail can have pot holes and trees that have blown over across the path. Most of the the time the trail is good and clear.

EQUIPMENT

This trail has been designed for ATV, Jeep, 4WD or truck.

ENVIRONMENT

The weather varies greatly and will affect the road conditions greatly. Be sure to check the Visitors Center before starting out on your tour.

SAFETY

It would be beneficial to you if you take something up that could help you clear away brush and trees that have fallen on the trail.



DO IT AT YOUR OWN PACE.

Best way to ride the trail is to follow the east side of the broan road heading south to the green shelf road. Then follow the red road around to Big Lake. If you want a more challenging path, follow the west side and travel north on the Shelf trails.

GET A CLOSER LOOK.

The Dark Valley Shelf Trails provide amazing opportunities to see different types of wildlife. Elk, deer, antelope, and on occasion, bears have been sighted on the Shelf trail. There are also many kinds of birds that call this area home. Be sure to be on the lookout!



TAKE IN THE VIEWS.



Points of Interest:

USFS Aquarius Ranger Station: N 38d11'43" W 111d34'34"

Dark Valley Staging Area: N 38d10'20" W 111d34'59"

Dark Valley Shelf Trail: N 38d06'14" W 111d36'00"

Blue Lake: N 38d04'57' W 111d34'15"

Purple Lake: N 38d04'23" W 111d34'22"

Boulder Top Trail: N 38d02'55" W 111d34'22"

Boulder Creek Trail: N 38d02'45" W 111d34'40"

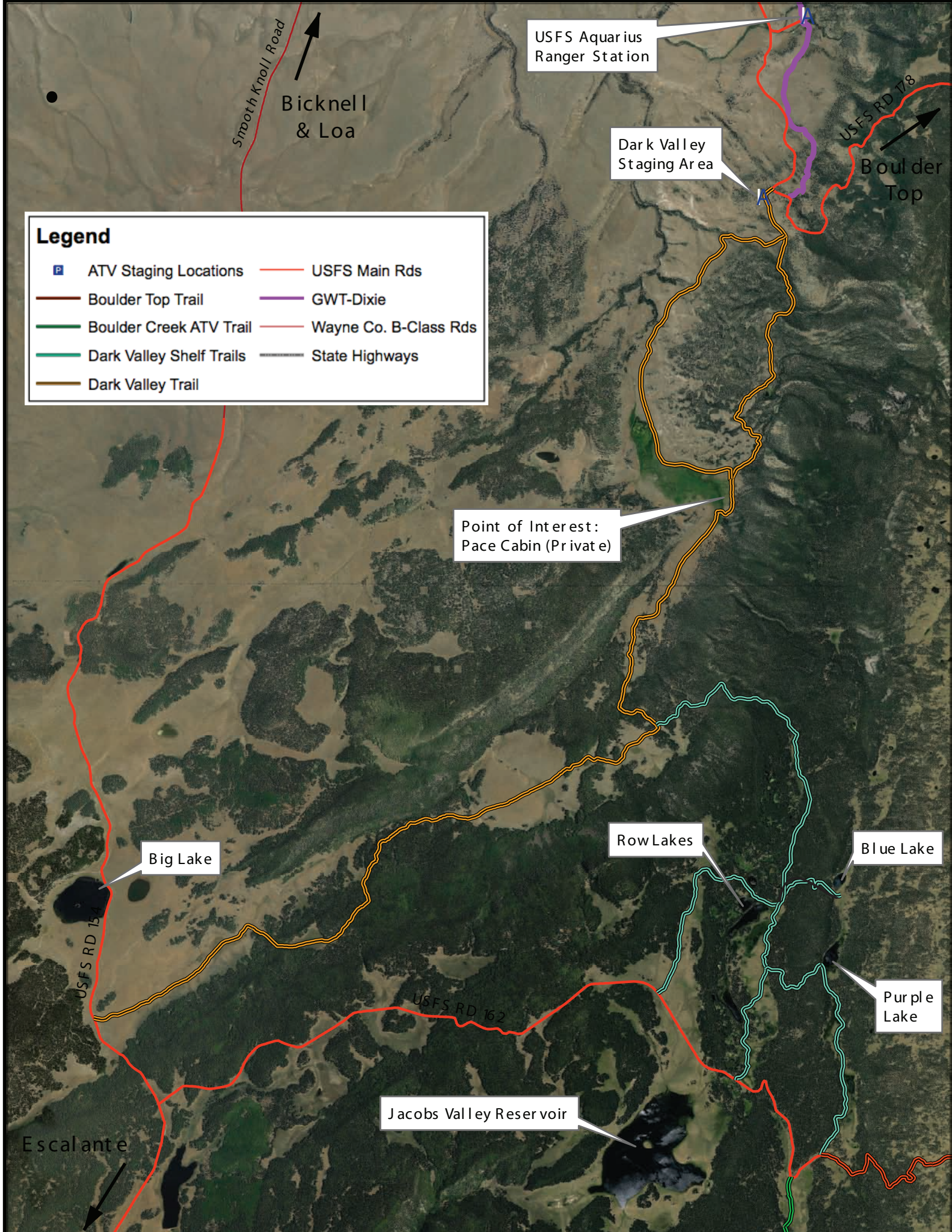
Trail tip: There is some private property located on this trail and so it is important to respect the people who own it by staying away. In case of emergency contact the ranger station.

If you have any further questions, please contact us at:

1-435-425-3365
info@capitolreef.travel

www.capitolreef.org





Smooth Knoll Road

Bicknell & Loa

USFS Aquarius Ranger Station

Dark Valley Staging Area

USFS RD 178
Boulder Top

Legend

ATV Staging Locations	USFS Main Rds
Boulder Top Trail	GWT-Dixie
Boulder Creek ATV Trail	Wayne Co. B-Class Rds
Dark Valley Shelf Trails	State Highways
Dark Valley Trail	

Point of Interest: Pace Cabin (Private)

Big Lake

Row Lakes

Blue Lake

Purple Lake

Jacobs Valley Reservoir

Escalante

USFS RD 154

USFS RD 162